

**Morecambe Bay**  
Academy

**Belong Believe Achieve**

Parent Information regarding school reopening  
on Monday 15<sup>th</sup> June 2020

[morecambebayacademy.co.uk](http://morecambebayacademy.co.uk)



**Morecambe Bay**  
Academy

# School re-opening on Monday 15<sup>th</sup> June 2020

We hope you and your family and friends are safe and well at this time.

In line with government guidance, we intend to re-open school on Monday 15<sup>th</sup> June.

This presentation will inform you of what this process will look like and how we will keep your child safe.

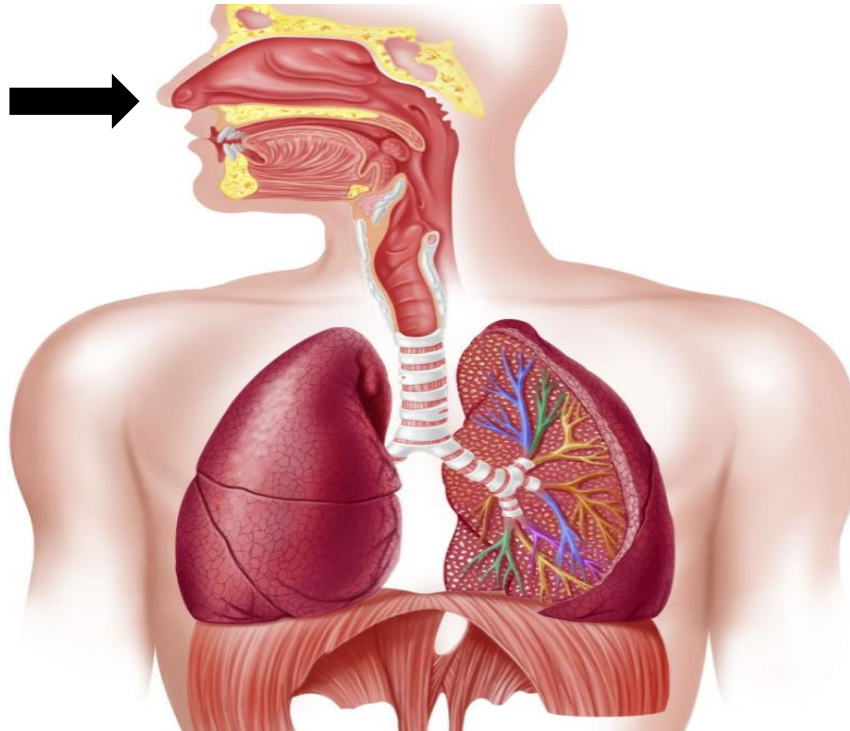
We will start with looking at how the school will minimise the risk of infection between students.



# How is the virus transmitted?

Coronavirus or COVID-19 is a respiratory illness. Which affects your lungs and airways. Therefore the route of entry is through the:

**Nose**  
**Mouth**  
**Eyes**



## Symptoms:

- New, continuous cough
- Fever/high temperature
- Shortness of breath
- Loss/reduced sense of taste and smell



# How is the virus transmitted?

The greatest risk of transmission is through droplets generated when an infected person coughs or sneezes and you inhale the droplets.

## Identified effective control:

- Prevent unwell people being in school
- Social distancing
- Catch it! bin it! kill it!





# How is the virus transmitted?

A lower risk of transmission is when these droplets fall on to a surface. Transmission can occur if you touch the surface and then touch your face with unwashed hands.

## Identified effective control:

- More regular hand washing
- More regular cleaning
- Restriction of movement around the building





# How school is protecting students

## Minimising contact with individuals who are unwell

- If your child or any members of your household are demonstrating symptoms of Covid-19, then your child **MUST** self isolate for 14 days and **MUST NOT** come into school.
- Only after 14 days, or if your child has tested negative for Covid-19, can they return to school.

## Social distancing

In line with government guidance, students and adults must maintain a distance of 2m from each other where possible. It is important that students socially distance on their way to and from school and when in the wider community.

- To support social distancing and to adhere to government guidance, we will only have 25% of the Year 10 students and Year 12 students in at any one time plus a small number of critical worker/vulnerable students. In reality we will have no more than 94 students in school at any one time.



# How school is protecting students

- Start of the day – students are to arrive through the front gates and report to an allocated zone on the front field, remaining 2m apart from their peers. Class teachers will then lead their groups to the classroom. **Class sizes will be no more than 15 students and a teacher.**
- Students must arrive between 8.50 and 8.55. The hours of the school day have been changed:
  - Lesson 1 – 9.00
  - Lesson 2 – 10.05
  - Lesson 3 – 11.10
  - Lunch - 12.15
  - Lesson 4 – 12.45
  - Lesson 5 – 1.50
  - End of school 2.50
- Each lesson has a 5 minute 'break' built into it. Students must maintain social distancing at these times.



# How school protecting is students

- Classrooms – all rooms that will be used have been set out to accommodate no more than 15 students and each desk is in its own 2m square area . Students will remain at their desk and only move with the permission and supervision of the class teacher.
- Students will remain in the same room with the same group of students all morning which reduces movement around the school site and interaction with other students. Students will be allowed to go to the toilet if necessary.
- In the morning, they will be taught English, Mathematics and Science. The relevant class teachers will move to the appropriate rooms.
- At the end of the morning session, students will be dismissed in an orderly fashion for lunchtime.





# How school is protecting students

This is what your child's classroom will look like. Each room has a hygiene pack containing wipes, tissues, hand sanitiser and there is a lidded bin to dispose of any unwanted items.





# How school protecting students

- Lunchtime – students can bring their own packed lunches or pre order a cold lunch/hot snack in the morning and these will be 'delivered' to the room they are in before lunchtime starts. If your child is in receipt of Free School Meals, this will be managed in the usual way.
- Students will be required to eat their lunch on the front field. They must not wander around other areas of the school site. Lunch will last 30 minutes.
- Students may be in groups of **no more than 6** – themselves and five others, and they must maintain a distance of 2m from each other. If the weather is not suitable to be outside, students will be asked to eat their lunches in their allocated 'morning' room.
- Students may use lunchtime as an opportunity to use the toilet although we will only be allowing in one student at a time.



# How school protecting students

- Afternoon lessons - at the end of lunchtime, students must make their way to their allocated afternoon classroom where they will be taught their option subjects. Once again, class sizes will be no more than 15 students and they must remain at their allocated desk once inside the room.
- Students will be dismissed in an orderly manner at the end of the school day and must leave the school site immediately.
- The school day ends at 2.50.



# How school protecting students

- Catch it, bin it, kill it – if your child coughs or sneezes, we encourage them to do this into a tissue – individual student packs are available in each room. If they do not have a tissue to hand then they should use the inside of their elbow to cough/sneeze into. Any tissues that are used must be placed in the lidded bin within the classroom.
- Cleaning hands more often than usual – students will be asked to wash their hands/use hand sanitiser when entering and leaving the room. They will also be asked to use hand sanitiser if they have coughed/sneezed into a tissue. Hand sanitiser is available in all classrooms.
- Not sharing equipment and resources – students must bring their own equipment to school. They must not share any of their belongings and this extends to food and drink, mobile phones or any other tangible items that could hold the virus on its surface.
- Enhanced cleaning - we have increased the number of cleaners in school each day and the frequency in which classrooms and other areas of school will be cleaned.



# How school protecting students

- Because there will only be 25% of the year group attending and because we have limited the movement of students throughout the school day, we are confident that we can manage social distancing.
- When students are moving across the school site, they must remember to maintain social distancing in the corridors and where possible, move outside. Like supermarkets have done, we have marked out two metre spaces and have a one way system in the main building.





# How school protecting students

- If any member of the school community starts to show symptoms during the school day, a member of the Senior Leadership Team will be informed and the student or adult will be isolated in a meeting room.
- If your child is demonstrating symptoms, you will be contacted immediately and arrangements will be made for your child to be sent home. Appropriate medical advice will be sought if necessary and first aid administered.
- Your child should then self isolate for 14 days and not return until this period of time has passed or your child has tested negative for Covid-19.
- The medical room will be deep cleaned after every use.





As you are already aware, we have high expectations of everyone in our school community. It is essential that students are well behaved when in school and follow all adult instructions at the first time of asking.

## Uniform

- To help reduce transmission, students do not have to wear their school tie and blazer. We expect them to wear charcoal grey trousers and a plain white shirt/blouse. Girls may continue to wear their school skirt. If more appropriate, students may wear their school PE kit.

## Home school contract

- We have drawn up a home school contract which outlines what we, as a school, will do and what our expectations are of your child and how you can support them and us in ensuring we have a safe and productive school environment.
- By sending your child to school, you and your child are in agreement to follow the expectations outlined.
- We have also added amendments to our behaviour and attendance policies which can be viewed on the school website under the 'School Life' tab.





## Home School Contract during Covid-19 pandemic



During the Covid-19 pandemic, it is essential that we protect everyone's health and wellbeing in addition to providing an appropriate academic curriculum. Morecambe Bay Academy will respond to and implement all relevant government guidance for educational settings.

### As an academy, we agree within a supportive and caring environment:

- to provide a secure, happy and safe place for your child to work in
- to provide appropriate hand washing facilities and promote good hygiene
- to provide teaching rooms which allow for social distancing to take place with no more than 15 pupils in a classroom
- to minimise the movement of students across the school site and within their allocated class groups
- to provide isolated facilities for any students demonstrating symptoms in school and to administer first aid where appropriate
- to provide appropriate social and emotional support
- to provide appropriate resources and materials for home learning.

**Mrs V Michael**  
Principal

### As parents, we ask you to agree:

- to ensure your child attends school if well enough to do so
- to contact school if your child is unable to attend school
- to support the school in making sure that your child follows the Behaviour for Learning policy
- to ensure your child wears the correct 'amended' uniform and brings their own equipment
- to encourage your child to maintain good hygiene and social distancing whilst travelling to and from school and whilst in school
- to keep your child at home if they are showing any symptoms of Covid-19 and in line with government guidance, isolate them for the appropriate length of time
- to inform us if your child is displaying symptoms of Covid-19 as soon as possible
- to be contactable throughout the school day should your child need return home.

### As a Morecambe Bay Academy student, we ask you:

- to be respectful of other students and adults in school
- to maintain social distancing (2m apart) with other students and adults whilst in school and in the wider community
- to practice good hygiene and follow school instructions regarding regular handwashing
- to inform a member of staff immediately if you or a friend is displaying symptoms of Covid-19
- to bring your planner, your exercise books, your pencil case and any other kit or equipment you need
- to dress in correct 'amended' uniform and have pride in your appearance
- to work hard in all lessons and encourage other students to do the same
- to follow the Behaviour for Learning policy, work to meet our expectations and accept any sanctions that are given
- to spend the proper amount of time and effort on home learning activities.





Miss Dixon, Head of Year 10, and other members of the pastoral support team will be in school everyday to support your child's social and emotional wellbeing.

- In order to avoid unstructured movement across the school, if your child wishes to speak to a member of staff about any pastoral issue then we ask that they speak with Miss Dixon at the start of the school day, when they first arrive, or at lunchtime or afterschool.
- Miss Dixon will schedule a time to meet with your child and the earliest opportunity during the school day. Students must not just 'turn up' to her office unannounced.
- When the meeting takes place, it must be done with social distancing in place.

If you decide to keep your child at home and have any concerns surrounding their wellbeing, please contact school on 01524 410207 or via [reception@morecambebayacademy.co.uk](mailto:reception@morecambebayacademy.co.uk) and a member of staff will be available for you.

- Our external support agencies will continue to work with their students remotely.
- If you have any safeguarding concerns, please contact school on 01524 410207 or use the safeguarding email: [safeguarding@morecmabebayacademy.co.uk](mailto:safeguarding@morecmabebayacademy.co.uk)