

A person wearing a straw hat and a blue backpack is seen from behind, looking at a blurred airport departure board.

BTEC

Tech Award Level 1/2 in

Travel and Tourism

Grading

Level	Qualification Grade	Equivalent grade (based on 2018)
Level 2	Distinction *	8.5
	Distinction	7
	Merit	5.5
	Pass	4
Level 1	Distinction	3
	Merit	2
	Pass	1

Assessment

Component 1: Travel and Tourism Organisations and destinations-
internal

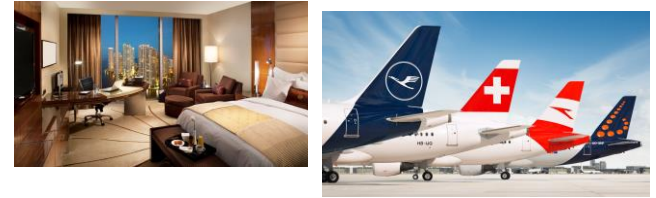
Component 2: Customer needs in Travel and Tourism- **internal**

Component 3: Influences on global Travel and Tourism - **external**



What will I learn?

Component 1: Travel and Tourism Organisations and Destinations



Learning Aim A

The major components of the UK travel and tourism industry

The ownership and aims of travel and tourism organisations and how they work together

The role of consumer technology in travel and tourism

Learning Aim B

Visitor destinations

Different types of tourism and tourism activities

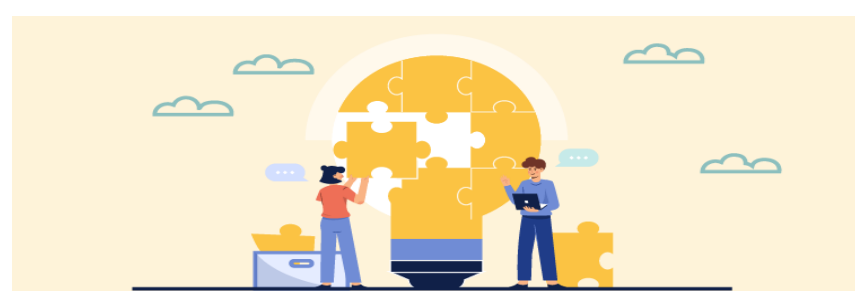
Popularity of destinations with different visitor types

Travel options to access tourist destinations

Modes of transport, hubs and routes



What will I learn?



Component 2: Customer needs in Travel and Tourism

Learning Aim A

Types of market research

How travel and tourism organisations may use market research to identify customer needs and preferences

How travel and tourism organisations may use research to identify travel and tourism trends

Learning Aim B

Customer needs and preferences

How travel and tourism organisations provide different products and services to meet customer needs and preferences

Customer needs and different types of travel

Travel planning to meet customer needs and preferences

What will I learn?

Component 3: Influences on Global Travel and Tourism

Learning Aim A

Factors that influence global travel and tourism

Response to factors

Learning Aim B

Possible impacts of tourism

Sustainable tourism

Managing sociocultural impacts

Managing economic impacts

Managing environmental impacts

Learning Aim C

Tourism development

The role of local and national governments in tourism development

The importance of partnerships in destination management



What skills will I need and develop?

- Teamwork is essential
- You must be able to manage your time effectively
- Commitment to completing all coursework



What can I do with my qualification?

- Further vocational courses
- Apprenticeships
- Entering the workplace



Questions



Business and Travel

I recommend that students DO NOT opt for both Travel and Tourism, although there is some overlap and so it may appear that the subjects compliment one another. They are very similar and would have quite a lot of repetition