

SKILLS DEVELOPED

TEAMWORK & LEADERSHIP

PUBLIC SPEAKING

PROBLEM SOLVING

CREATIVITY & INNOVATION

DECISION MAKING

RESILIENCE & STAYING POSITIVE

PLANNING & ORGANISATION

Core Theme 1	Health and Well Being British Values
Core Theme 2	Relationships British Values Statutory Relationships and Sex
Core Theme 3	Living in the Wider World Finance Mental Health and Well Being
Core Theme 4	The Church and God Shared Human experiences
Core Theme 5	Jesus and the bible Beliefs and values Living Religious Traditions
Core Theme 6	An Introduction to Hinduism Beliefs and values Living Religious Traditions

An Introduction to Hinduism

- The Origins of Hinduism
- What is Brahman?
- What is the Trimurti?
- Proud to be British?
- Why do Hindus worship many Gods?
- The story of the Ramayana

YEAR 8 + GCSE's ★★★★★

YEAR HT6

Jesus and the Bible

- Christian Creation Story
- Christian Stewardship
- How Christian organizations look after the created world
- Who was Jesus and what was his world like?
- The good Samaritan and outcasts
- Was Jesus a Rebel?

YEAR 7 HT5

The Church and God

- What makes a church?
- What are the features of a church?
- Baptism-Infant and Believers
- Commemorating important Events
- Cause and Effect-Was the Universe Caused
- How did the Universe begin?

YEAR 7HT4

Living in the wider world

- Aspirations and Resilience
- Improving self esteem
- Setting Goals
- Gender Stereotypes
- Money Management- Loans and Savings
- Budgeting money
- Making Ethical Financial Decisions

YEAR 7HT3

Relationships

- British Values-Prejudice and Discrimination
- Healthy Friendships-Bullying and Banter
- Managing trolling-Cyber Bullying and online safety
- Extremism and Radicalization
- Healthy Relationships
- Family Units and Marriage

Health and wellbeing and British Values

- Understanding change
- British Values
- Healthy Lifestyles
- Dangers of Drugs, Alcohol and Tobacco
- Emotional and Physical changes in puberty
- Menstruation
- FGM and the law

YEAR 7 HT2 **YEAR 7 HT1**



RSE 2020 COMPLIANT

HEALTH 2020 COMPLIANT

GATSBY BENCHMARKS

CURRICULUM OVERVIEW

- ### SPIRAL THEMATIC APPROACH
- 1) Rights, Responsibilities and British Values
 - 2) Celebrating Diversity and Equality
 - 3) Relationships & Sex Education
 - 4) Staying Safe Online & Offline
 - 5) Health and Wellbeing
 - 6) Life Beyond School

- ### Progress and Assessment
- ✓ Themed PSHE Projects,
 - ✓ Confidence Checkers
 - ✓ Baseline Quiz
 - ✓ End of unit Quizzes

welcome





Life and RE Learning Journey

Year 8



SKILLS DEVELOPED

TEAMWORK & LEADERSHIP

PUBLIC SPEAKING

PROBLEM SOLVING

CREATIVITY & INNOVATION

DECISION MAKING

RESILIENCE & STAYING POSITIVE

PLANNING & ORGANISATION

Core Theme 1	Citizenship PSHE British Values Statutory Relationships and Sex
Core Theme 2	Citizenship PSHE
Core Theme 3	PSHE Statutory Health Mental health and wellbeing
Core Theme 4	Religious Education Living Religious Traditions The search for personal meaning
Core Theme 5	Religious Education Beliefs and values
Core Theme 6	Religious Education Shared Human experiences

YEAR 8 HT6

Islam

- Beliefs about Allah
- Muhammad's life
- The Qur'an
- The night of power
- Sami Yusuf's message behind his music
- Muslim Fashion and dress codes

➤ Around and around it goes, like Shiva, the cosmic dancer

➤ Death

➤ Birth

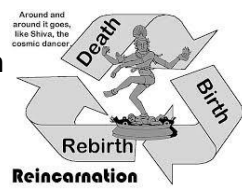
➤ Reincarnation

➤ YEAR 9



Hinduism

- The Sangha
- Santana dharma and Brahman
- Beliefs about life after death
- The caste system
- The festival of Holi
- Pandurang Athavale and his influence



YEAR 8 HT4

Buddhism

- Siddhartha Gautama
- The Eightfold Path
- The Four Noble Truths
- Dharma and Buddha's parables
- Beliefs about life after death



Health and wellbeing

- Personal safety and first aid
- Road safety
- Peer influence and alcohol
- Keeping good mental health
- Body image pressures
- Positive body image
- Coping with changes and loss



my BODY

YEAR 8 HT2

Living in the wider world

- Equality and human rights
- Disability and the media
- Stereotypes and the media
- The value of money
- Income tax and national insurance
- Financial risk-taking
- Public taxes and spending

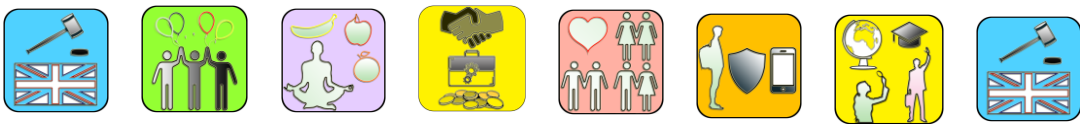
£

Relationships and British Values

- British Values
- Religious discrimination
- Grooming and social media
- Sexting and the law
- Sexual consent and the law
- LGBTQAI+ rights
- Contraception

YEAR 8 HT1

CURRICULUM OVERVIEW



RSE 2020 COMPLIANT

HEALTH 2020 COMPLIANT

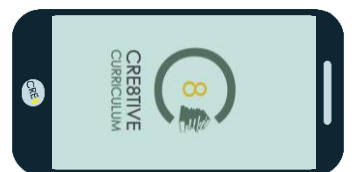
GATSBY BENCHMARKS

CURRICULUM OVERVIEW

- ### SPIRAL THEMATIC APPROACH
- 1) Relationships and British values
 - 2) Rights, Responsibilities and British Values
 - 3) Health and Wellbeing
 - 4) Buddhism
 - 5) Hinduism
 - 6) Islam

- ### Progress and Assessment
- ✓ Themed Life and RE Projects
 - ✓ Baseline Quiz
 - ✓ End of unit confidence checker

welcome



SKILLS DEVELOPED

TEAMWORK & LEADERSHIP

PUBLIC SPEAKING

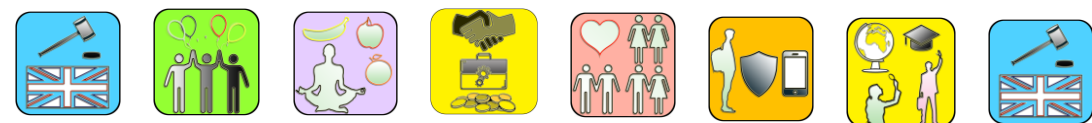
PROBLEM SOLVING

CREATIVITY & INNOVATION

DECISION MAKING

RESILIENCE & STAYING POSITIVE

PLANNING & ORGANISATION



RSE 2020 COMPLIANT

HEALTH 2020 COMPLIANT

GATSBY BENCHMARKS

CURRICULUM OVERVIEW

- SPIRAL THEMATIC APPROACH**
- 1) Rights, Responsibilities and British Values
 - 2) Celebrating Diversity and Equality
 - 3) Relationships & Sex Education
 - 4) Staying Safe Online & Offline
 - 5) Health and Wellbeing
 - 6) Life Beyond School

- Progress and Assessment**
- ✓ Themed PSHE Projects,
 - ✓ Confidence Checkers
 - ✓ Baseline Quiz
 - ✓ End of unit Quizzes

welcome



SKILLS DEVELOPED

TEAMWORK & LEADERSHIP

PUBLIC SPEAKING

PROBLEM SOLVING

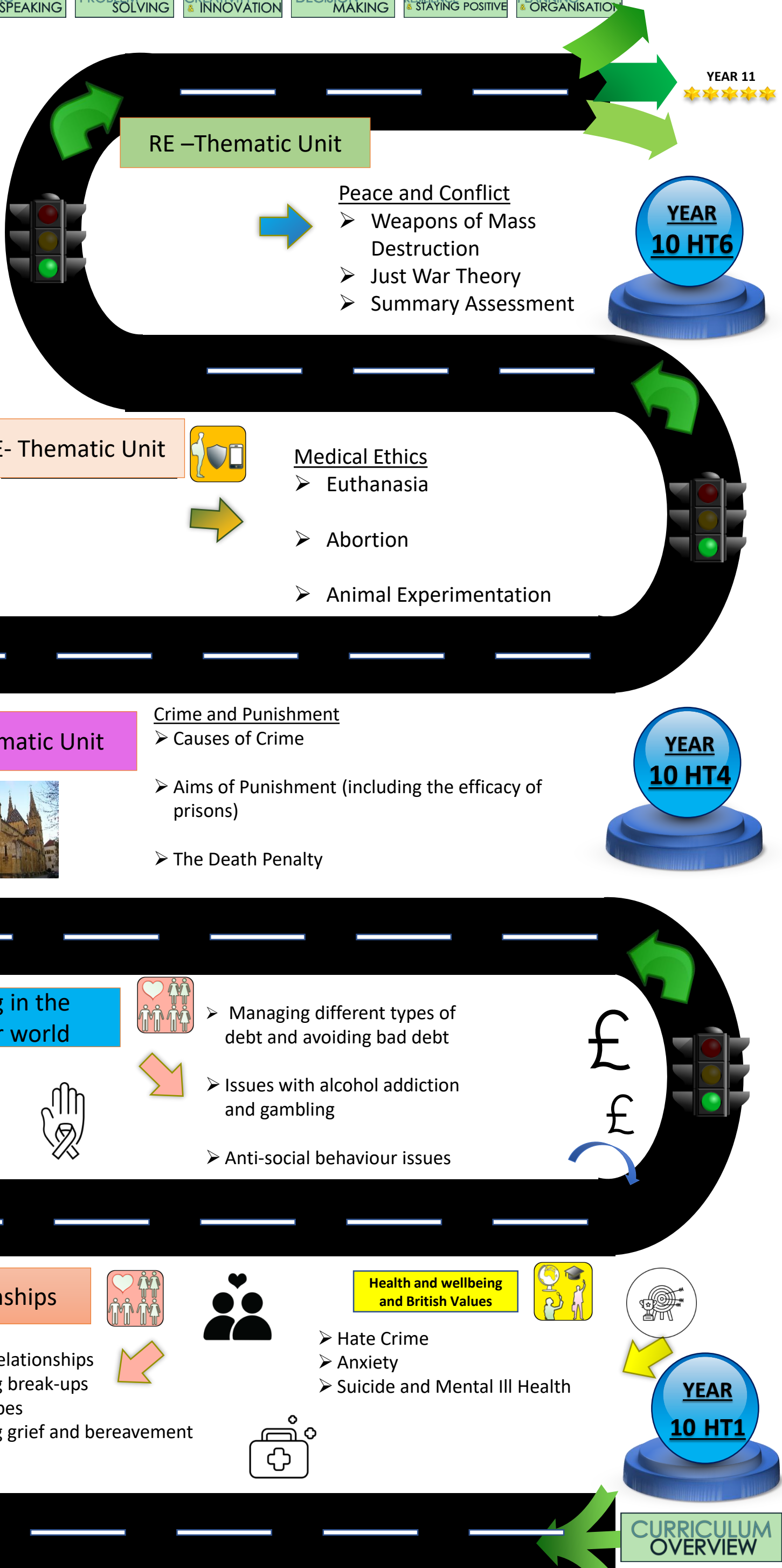
CREATIVITY & INNOVATION

DECISION MAKING

RESILIENCE & STAYING POSITIVE

PLANNING & ORGANISATION

For all thematic Units these contemporary issues will be examined from both Religious and Secular perspectives



RE-Thematic Unit

Peace and Conflict

- Weapons of Mass Destruction
- Just War Theory
- Summary Assessment

YEAR 10 HT6

RE-Thematic Unit

Medical Ethics

- Euthanasia
- Abortion
- Animal Experimentation

YEAR 10 HT5

RE-Thematic Unit

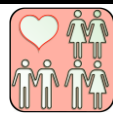
Crime and Punishment

- Causes of Crime
- Aims of Punishment (including the efficacy of prisons)
- The Death Penalty



YEAR 10 HT4

Living in the wider world



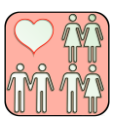
- Managing different types of debt and avoiding bad debt
- Issues with alcohol addiction and gambling
- Anti-social behaviour issues



£
£

YEAR 10 HT3

Relationships



Health and wellbeing and British Values



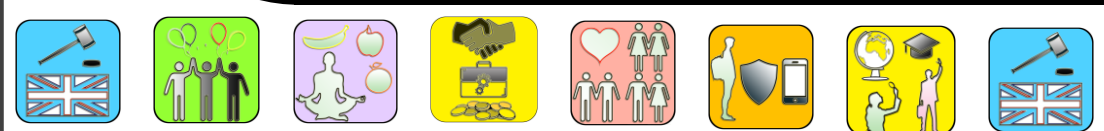
- Healthy relationships
- Managing break-ups
- Family types
- Managing grief and bereavement

- Hate Crime
- Anxiety
- Suicide and Mental Ill Health



YEAR 10 HT1

CURRICULUM OVERVIEW



RSE 2020 COMPLIANT
HEALTH 2020 COMPLIANT
GATSBY BENCHMARKS
CURRICULUM OVERVIEW

- SPIRAL THEMATIC APPROACH**
- 1) Rights, Responsibilities and British Values
 - 2) Celebrating Diversity and Equality
 - 3) Relationships & Sex Education
 - 4) Staying Safe Online & Offline
 - 5) Health and Wellbeing
 - 6) Life Beyond School

- Progress and Assessment**
- ✓ Themed PSHE Projects,
 - ✓ Confidence Checkers
 - ✓ Baseline Quiz
 - ✓ End of unit Quizzes

welcome



SKILLS DEVELOPED

TEAMWORK & LEADERSHIP

PUBLIC SPEAKING

PROBLEM SOLVING

CREATIVITY & INNOVATION

DECISION MAKING

RESILIENCE & STAYING POSITIVE

PLANNING & ORGANISATION

6th Form/College
★★★★★

EXAM

➤ Year 11 Exam Season/Study leave



YEAR 11 HT6

Examinations Preparation

➤ Revision for Exams



YEAR 11 HT5

RE –Thematic Unit

All topics are covered from a Christian and Secular perspective with reference to Muslim views

- Human Sexuality
- Human Rights and Social Justice
- Racial Discrimination

YEAR 11 HT4

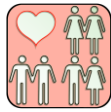
Life -PSHE

- Stress and Resilience
- CPR
- Work and Enterprise Skills
- Preparing for Adult Life
- Summary Assessment



YEAR 11 HT3

Life -PSHE



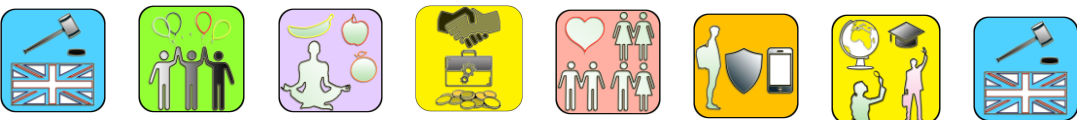
- Mob Mentality
- Consent and Rape
- Sex Education
- Self Examinations (Breasts and Testicles)
- Fertility /STI's and Reproductive Health



YEAR 11 HT2

YEAR 11 HT1

CURRICULUM OVERVIEW



RSE 2020 COMPLIANT

HEALTH 2020 COMPLIANT

GATSBY BENCHMARKS

CURRICULUM OVERVIEW

SPIRAL THEMATIC APPROACH

- 1) Rights, Responsibilities and British Values
- 2) Celebrating Diversity and Equality
- 3) Relationships & Sex Education
- 4) Staying Safe Online & Offline
- 5) Health and Wellbeing
- 6) Life Beyond School

Progress and Assessment

- ✓ Themed PSHE Projects,
- ✓ Confidence Checkers
- ✓ Baseline Quiz
- ✓ End of unit Quizzes

welcome

